



South West Recreational Fishing Enhancement Trial Project

Michael Burgess
Coordinator, Community Education
Department of Fisheries



Government of **Western Australia**
Department of **Fisheries**



ROYALTIES
FOR REGIONS

SW Artificial Reef Trial Project

- Trialling the effectiveness of artificial reefs within the Western Australian Marine Environment
- The first trial of its kind in Western Australia
- Create new fishing opportunities for Geographe Bay
- \$2.38 Million budget including:
 - \$1.86M from Royalties for Regions, and
 - \$520,000 from recreational fishing licence revenue
- The artificial reef trial complements WA's robust and adaptive fisheries management approach to help ensure our fish stocks are kept sustainable.



Why Artificial Reefs

Specific purposes and benefits:

- create or enhance habitat for fish and other aquatic animals;
- provide alternate/new fishing and tourism opportunities;
- restore, mitigate or offset damage/loss of natural reefs/habitats;
- support aquaculture or marine ranching; and
- provide research opportunities for testing ecological processes.

Artificial reef principles:

- create complex space & habitat for targeted fish species;
- Promoting growth of marine life that can support a diverse community and lead to increase in biological production and biodiversity.





Artificial Reefs Elsewhere

International Experience

- WA delegation visits to North Asia
- Proven to provide environmental benefits where reefs support greater biodiversity than adjacent natural reefs.

South Korea

- Over AU\$900 million in the past 40 years;
- AU\$55 million per year for the last decade;
- To provide habitat protection and restoration and increase species diversity;
- 35,000ha of seaweed forest planted from 2009 to 2010 to form fish spawning area and fish habitat.

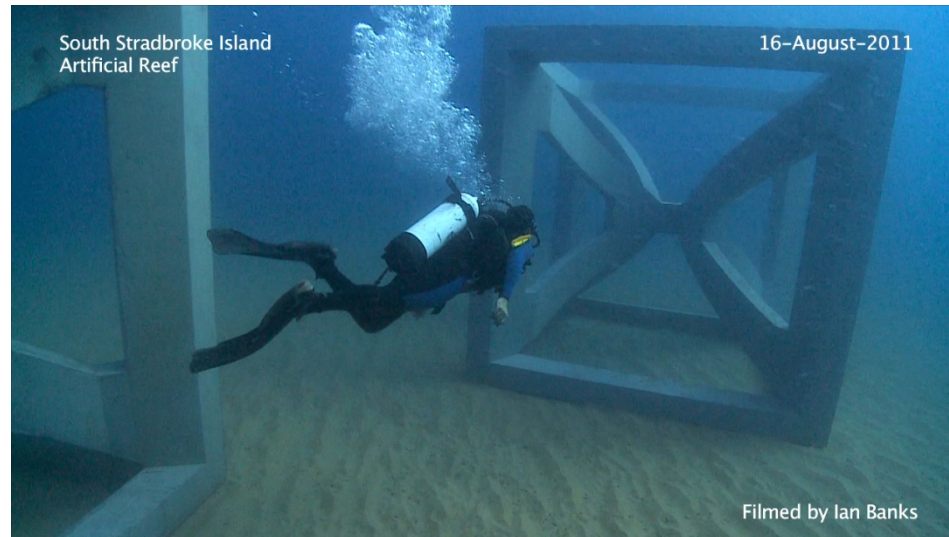
Australian Experience

- Artificial reefs have recently been deployed in Queensland NSW and Victoria.

Reef Design

Open cube design

- Advice from other jurisdictions
- Reinforced marine grade concrete
- 3m high, 3m wide
- 10 tonnes each
- Deployed in cluster configuration
- Approximately 30 modules per reef





Location consultation

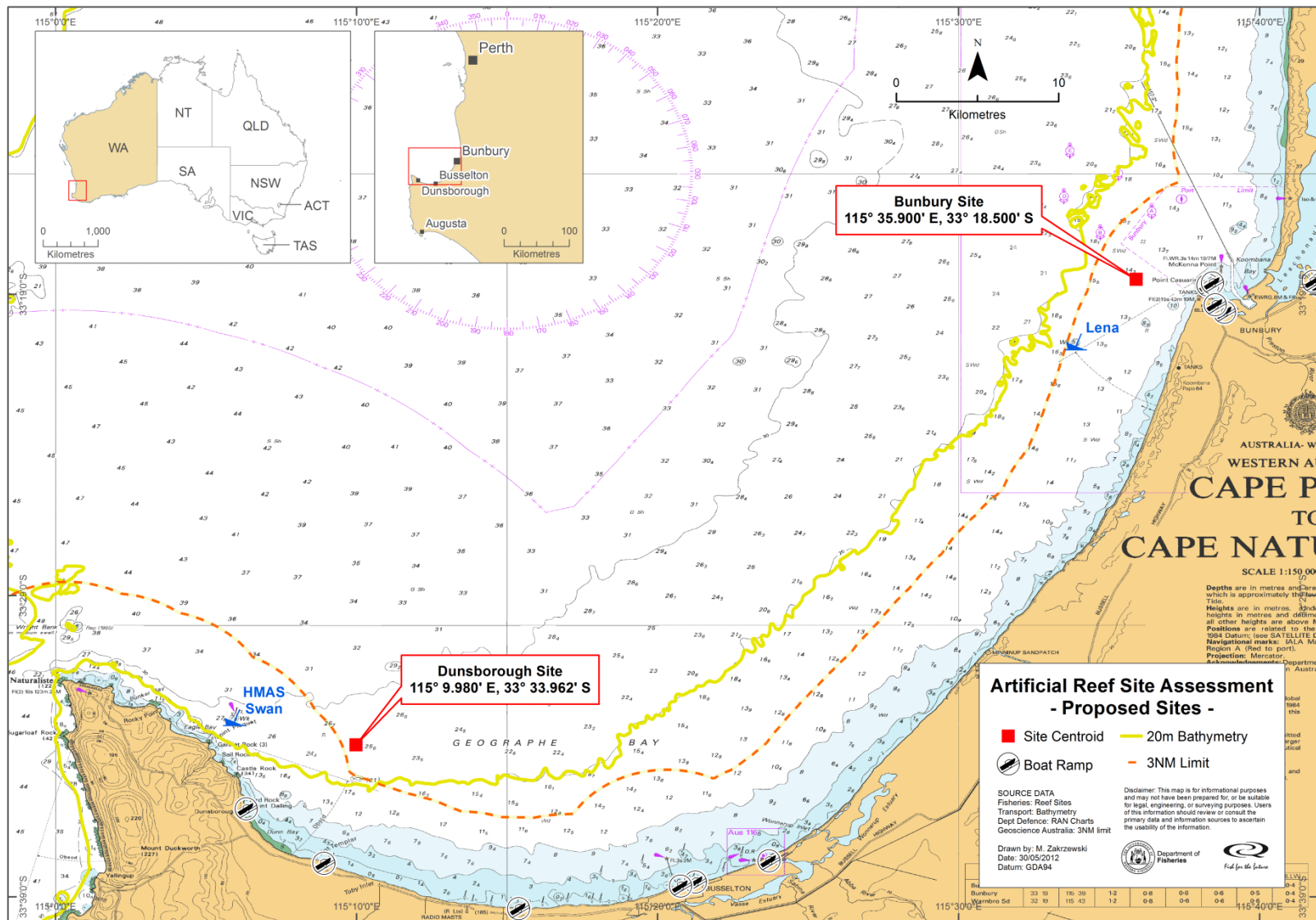
South-West Artificial Reefs Reference Group and key stakeholders to:

- background on the project
- potential sites, project objectives, constraints and expectations.

Criteria were used to identify possible sites for the artificial reefs:

- Target species (near-shore species) skippy, KG's, yellowtail, Samsonfish, yellowtail kingfish;
- Close to boat ramps - safe access by small vessels
- Predominantly sand substrate avoid seagrass
- Within the Geographe Bay area
- Mindful of State and Comm marine park zoning
- Water depth of 20m to 30m

Proposed sites



QLD Deployment



Artificial Reef Scientific Reference Group

Established with independent experts in marine monitoring to assist in evaluating monitoring and evaluation strategies :

1. Social/ economic
2. Biological
3. Ecological
4. Artificial Reef Structures





Project timeframe

Approvals/Clearance Process

- Commonwealth (SEWPaC)
- State (EPA, DoT, RDL, DMP, DIA, DEC (MPRA), DoF)

Monitoring and evaluation

- Scientific reference group

Tender Process

- Design, manufacture, deploy
- Constructed and deployed by early 2013