

THE SHIFTING GLOBAL FRAMEWORK

**AND ITS IMPACT ON THE SOUTH WEST OF
WESTERN AUSTRALIA**

**SOUTH WEST DEVELOPMENT COMMISSION
GLOBAL HORIZONS FORUM
BUNBURY 3 JUNE 2010**

**BY
LIEUTENANT GENERAL JOHN SANDERSON, AC**

Everything is
complex and non linear
but part of a continuity

PARADIGM

DEFINITION:

**“ A SET OF CONCEPTS SHARED BY A
COMMUNITY OF SCHOLARS OR
SCIENTISTS “**

Macquarie Dictionary Third Edition

CHAOS THEORY AND COMPLEXITY

THE REFORMATION AND STATE SOVEREIGNTY

(THIS IS ALL VERY RECENT IF YOU COME FROM OTHER THAN EUROPE!)

- ▣ **FOUR HUNDRED YEARS AGO GALLILEO CONFIRMED THAT THE EARTH WAS NOT THE CENTRE OF THE UNIVERSE**
- ▣ **360 YEARS AGO THE PEACE OF WESTPHALIA BEGAN THE IDEA OF STATE SOVEREIGNTY**
- ▣ **WHO WAS THE SOVEREIGN? THE ENLIGHTENMENT AND LIBERALISM IS ALL ABOUT THIS.**

MARKET FORCES & COMPLEXITY

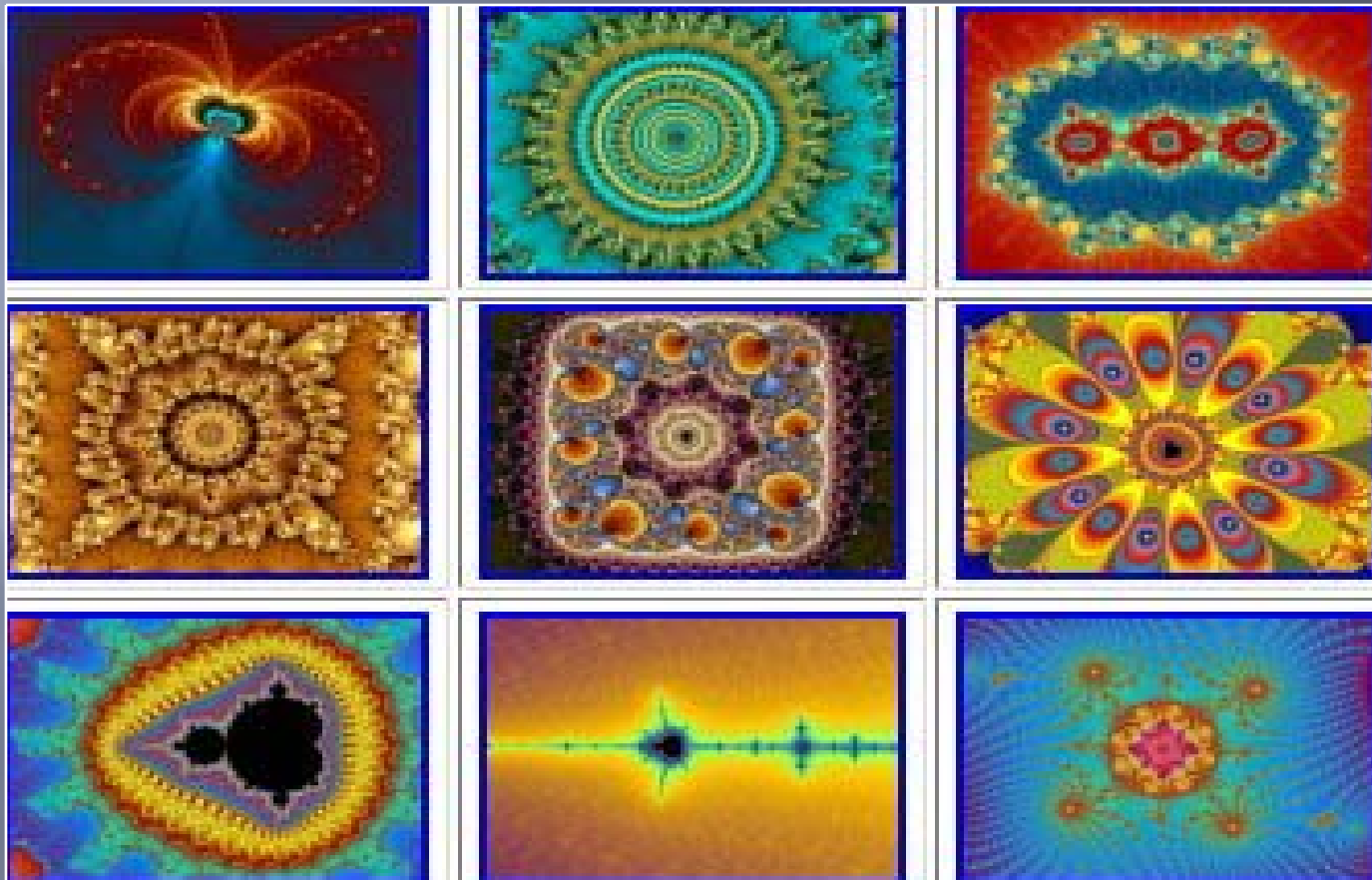
- **DEPENDS ON CONSTANT ECONOMIC GROWTH**
- **WHAT IF PEOPLE STOP CONSUMING?**
- **WHY DO PEOPLE STOP CONSUMING?**
- **WE DON'T KNOW!**
- **THEREFORE THE MARKET FORCES PHILOSOPHY HAS ALWAYS BEEN A BIG RISK**
- **WHAT WAS THE MAGNITUDE OF THAT RISK AND WHO CARRIED IT?**

**WHAT IF THE CURRENT GLOBAL
SYSTEM TURNS LIQUID?**

**WHO WILL BUILD AND MAINTAIN
THE LIFE RAFTS?**

CHAOS THEORY AND COMPLEXITY

ATTRACTORS AND FRACTALS



**THE STRANGE ATTRACTOR
AND
THE COMPLEX ADAPTIVE
SYSTEM**



**FEEDBACK LOOPS
ARE THE SINGLE
MOST IMPORTANT
DETERMINANT OF A
COMPLEX ADAPTIVE
SYSTEM**

HUMAN CREATIVITY DETERMINES HOW WE RESPOND TO CHANGE

- ▣ **IMAGINE CRISES THAT MAY OCCUR AND
BUILD CONTINGENCY PLANS**
- ▣ **IMAGINE A BETTER FUTURE AND COME
TOGETHER TO BUILD THAT FUTURE**
- ▣ **IMAGINE OUR WAY THROUGH CRISIS AND
BUILD ALLIANCES**

**FEAR AND A LACK OF
IMAGINATION ARE THE ENEMY OF
CREATIVITY
AND THEREFORE OF THE
COMPLEX ADAPTIVE PROCESS**

**CERTAINTY IS THE ENEMY OF
CREATIVITY**

THE KEY INGREDIENTS OF MODERN LEADERSHIP

**KNOWLEDGE
WISDOM
COMPASSION
MORAL COURAGE**

FUNDAMENTAL ASSERTION

- **RECONCILIATION IS THE ONLY FOUNDATION OF STRATEGY AND**
- **ALLIANCE BUILDING IS THE GREAT ART FORM OF THE 21ST CENTURY**

RECONCILIATION

‘coming together and having a strategic conversation on the basis of cultural respect and equality as human beings, aimed at generating a shared vision for the future and agreement on the paths we should take to get there’



CHARACTERISTICS OF THE PERIOD 1945 - 1989

- **INDEPENDENCE AND
IDEOLOGICAL STRUGGLES**
- **WIDESPREAD INSTABILITY**
- **THE POSSIBILITY OF GLOBAL NUCLEAR WAR**
- **NUMBER OF NATION STATES QUADRUPLED
FROM 50 IN 1945 TO NEARLY 200 BY THE TURN OF
THE CENTURY**

CHARACTERISTICS OF PERIOD 1989 - 2009

- **the idea of globalisation has taken hold**
- **economic rationalism versus a religious and cultural commitment to the mystical.**
- **energy shortages, water shortages, climate change, plague and food shortages in the background.**
- **Modern communications have made the differences between the haves and the have nots more obvious.**
- **weapons of mass destruction have proliferated**

entering a time that is
infinitely more dangerous –
particularly if we stop talking
to each other.

THE SHIFTING GLOBAL FRAMEWORK

**AND ITS IMPACT ON THE SOUTH WEST OF
WESTERN AUSTRALIA**

**SOUTH WEST DEVELOPMENT COMMISSION
GLOBAL HORIZONS FORUM
BUNBURY 3 JUNE 2010**

**BY
LIEUTENANT GENERAL JOHN SANDERSON, AC**

**THE CENTRE OF GRAVITY OF
WORLD POWER IS MOVING EAST,
AWAY FROM THE NORTH
ATLANTIC TOWARDS THE ASIA
PACIFIC REGION**

ISSUES OF NATIONAL POWER

- **INDIVIDUAL RIGHTS VERSUS ORDER AND STABILITY**
- **EMBRACING AND INCLUSIVE SOCIETIES HAVE A BETTER CHANCE OF BUILDING ALLIANCES**



- 1. KUWAIT
- 2. BAHRAIN
- 3. QATAR
- 4. UNITED ARAB EMIRATES
- 5. TURKMENISTAN

**WHAT IF THE CURRENT GLOBAL
SYSTEM TURNS LIQUID?**

**WHO WILL BUILD AND MAINTAIN
THE LIFE RAFTS?**

**the most important component
of power is the creative
potential of people and the
commitment of those people to
invest their talents and
energies in the future.**

**WHAT DECIDES WHICH
NATIONS ARE GOING TO
SURVIVE THE WHIRLPOOL,
AND WHICH ONES ARE GOING
TO SINK WITHOUT TRACE?**

CONCLUSION

**UNLEASH THE
CREATIVE GENIUS OF
YOUR PEOPLE**

TRUST

DEFINING YOUR FUTURE

**THE IMPORTANCE OF
BUILDING STABILITY IN
THE ASIA PACIFIC REGION**